

# Ruelco



**RB-1 Universal Control Valve**

**Model 16A1**

Phone (504) 340-0055  
Fax (504) 340-0056

# RB-I

## Automatic Reset

## Universal Control Valve Model I6AI

### FEATURES

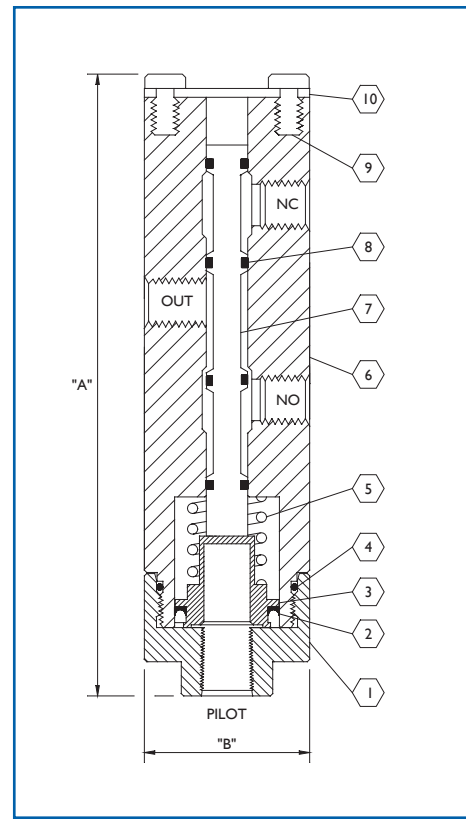
- 316 stainless steel construction (models to N.A.C.E. MR0175 available).
- Large Cv factor assures fast system response.
- Viton and nitrile seals are utilized for dependability.
- Inconel X-750 springs assures dependability in most corrosive environments.
- All ports are 1/4" NPT
- Supply pressure and pilot cap pressure are independent of each other

### OPTIONS

- Panel mountable valve model available (1" panel mount hole required).
- Floor mountable brackets available.

#### GENERAL DESCRIPTION:

The Ruelco 'RB-I' relay is a multi-pressure control valve for production control and safety systems. It functions as an automatic reset, pilot operated, normally open or closed, block and bleed valve.



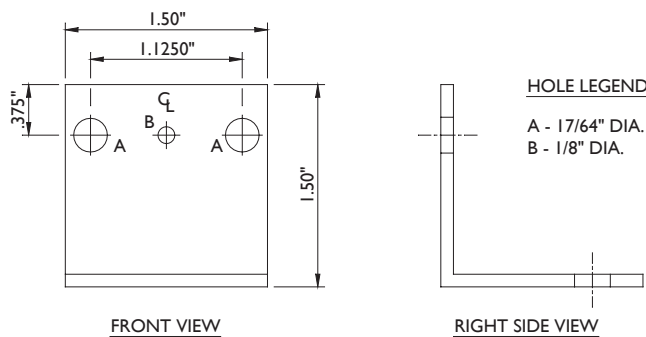
### Parts List For RB-I Universal Control Valve

Item	Qty.	Description	Material	Part No.
1	1	Base	AISI 316 St. Stl.	16-003-000
2	1	Piston Seal	Nitrile	NU-209-70H
3	1	Piston	AISI 316 St. Stl.	16-004-000
4	1	Base O-Ring	Viton	VO-024-000
5	1	Spring	Inconel X-750	10-017-000
6	1	Body	AISI 316 St. Stl.	16-001-000
7	1	Spool	AISI 316 St. Stl.	16-002-000
8	4	Spool Seal	Viton	VO-009-75T
9	2	Screw	AISI 316 St. Stl.	T6-420-0G3
10	1	End Plate	AISI 316 St. Stl.	16-005-000

#### Specifications P.S.I. (BAR)

Valve Body Max. W.P.	150 (10.3)
Ambient Temperature Range	-20 to 250 deg. F -29 to 122 deg. C
Min. Pilot Signal Pressure To Hold N.C. Valve Open	25 (1.7)
Min. Pilot Signal Pressure To Hold N.C. Valve Closed	25 (1.7)
Cv Factor	1.4

### Optional Mounting Bracket



#### Dimensions Inch (MM)

'A'	5.45 (138.4)
'B'	1.50 (38.1)
Ports	1/4" NPT
Weight	2.25 lbs (1.02 kg)

### Ordering Code: I6AI X 2 0000

BASE MODEL NUMBER

Standard Corrosive Service - (-)  
N.A.C.E. Option - N