

# Ruelco



**MP-4 Manual Reset Relay**

**Model 1901**

Phone (504) 340-0055  
Fax (504) 340-0056

# MP-4

## Manual Reset Relay

### FEATURES

- 316 stainless steel construction (models to N.A.C.E. MR0175 available).
- Easy to close with pilot signal pressures as high as 100 psi.
- Can be repaired without removing relay from system or panel.
- May be used in pneumatic or hydraulic systems.
- 'Lock Closed' design prevents relay from automatically opening.
- Viton and nitrile seals are utilized for dependability.
- Design minimizes malfunctions due to supply system debris.
- Inconel X-750 spring assures dependability in most corrosive environments.

### OPTIONS

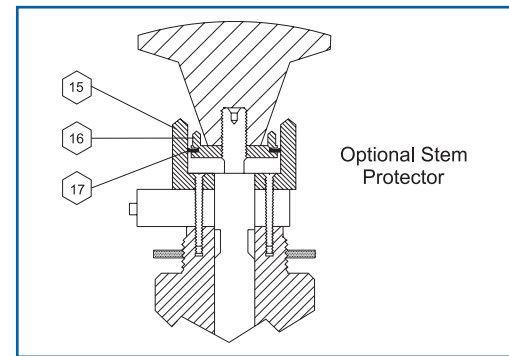
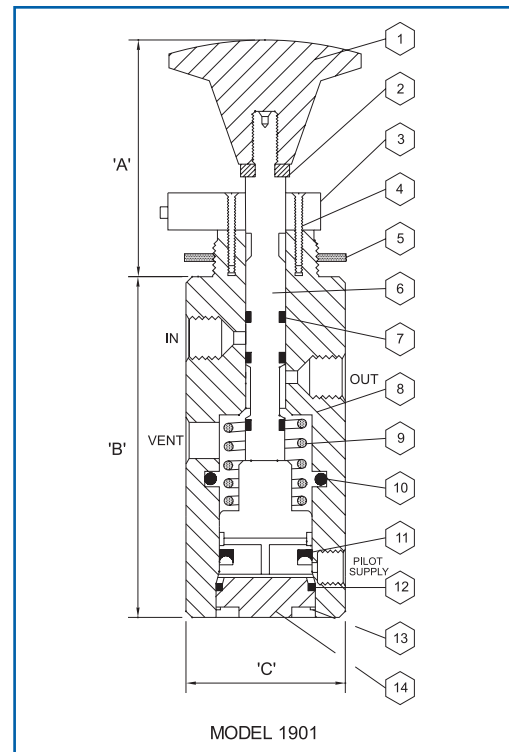
- 30 psi closing spring.
- Stem protector to prevent external debris accumulation on relay shaft.
- Green or red knob colors (black is standard).

#### GENERAL DESCRIPTION:

The Ruelco 'MP-4' relay is a multi-pressure control valve for production control and safety systems. It functions as a manual reset, pilot operated, normally closed, block and bleed valve. Its simple and compact design makes maintenance and repair easy. The MP-4 does not have to be removed from its control panel or system loop if repair or maintenance is necessary.

#### Parts List For Manual Relay Model MP-4

Item	Qty.	Description	Material	Part No.
1A	1	Black Knob	Phenolic	ZO-200-001
1B	—	Red Knob	Phenolic	ZO-200-002
1C	—	Green Knob	Phenolic	ZO-200-003
2	1	Lock Nut	316 St. Stl.	T6-08K-0F3
3	1	Detent Assembly	316 St. Stl.	10-005-000
4	2	Screw	316 St. Stl.	T3-632-0G3
5	1	Panel Mount Nut	316 St. Stl.	10-006-000
		Shaft Assembly	316 St. Stl. W/	
6A	1	With Delrin Piston	Delrin	19-005-0A0
6B	—	With St. Stl. Piston	316 St. Stl.	19-005-0A1
7*	3	Shaft Seal	Viton	VO-009-75H
8	1	Body	316 St. Stl.	19-001-0A0
9A	1	20 PSI Spring	Inconel X-750	10-024-000
9B	—	30 PSI Spring	Inconel X-750	10-017-000
10*	1	Body Seal	Viton	VO-118-75T
11*	1	Piston Seal	Nitrile	NU-209-70H
12*	1	Base Seal	Viton	VO-019-75H
13	1	Retaining Ring	316 St. Stl.	S2-910-093
14A	1	Delrin Base	Delrin	19-004-000
14B	—	St. Stl. Base	316 St. Stl.	19-004-001
15	1	Stem Protector Housing	Delrin	10-015-000
16	1	Seal Washer	Delrin	10-016-000
17#	1	Stem Protector Seal	Nitrile	NU-210-70H
18	—	Rep. Kit W/O Protector	* Items	19-006-000
19	—	Rep. Kit W/ Protector	* & # Items	19-007-000



#### Dimensions Inch (MM)

'A' (Closed / Open)	2.36/2.73 (60/69.3)
'B'	3.25 (82.5)
'C'	1.5 (38.1)
"In" and "Out" Port Size	1/4" NPT
Pilot Port Size	1/8" NPT
Panel Mount Hole	1.0 (25.4)
Max. Panel Thickness	.18 (4.6)
Weight	1.6 Lb. (.72 Kg.)

#### Specifications P.S.I. (Bar)

Valve Body Max. W.P.	150 (10.3)
Pilot Cap Max. W.P.	125 (8.6)
Ambient Temp. Range	-20 to 250 deg. F -29 to 122 deg. C
Minimum Pilot Signal Pressure To Hold	25 (1.7) with 20 PSI Spring 35 (2.4) with 30 PSI Spring.
Relay Open C <sub>v</sub> Factor	.34

### Ordering Code: 1901 X 2 X X X X

BASE MODEL NUMBER

Standard Corrosive Service - (-)  
N.A.C.E. Option - N

Black Knob - B  
Red Knob - R  
Green Knob - G

0 - Without Panel Mount Nut

0 - Without Stem Protector  
P - With Stem Protector  
S - With St. Stl. Piston & Base  
T - With Options P & S Above

2 - 20 psi Closing Spring  
3 - 30 psi Closing Spring