

Ruelco



Pneumatic Flange Mount Level Switch 3IC2

2063 Paxton Street
Harvey, LA 70058
Phone (504) 340-0055
Fax (504) 340-0056

Model 31C2 Manufactured Under U.S. Patent # 4838303

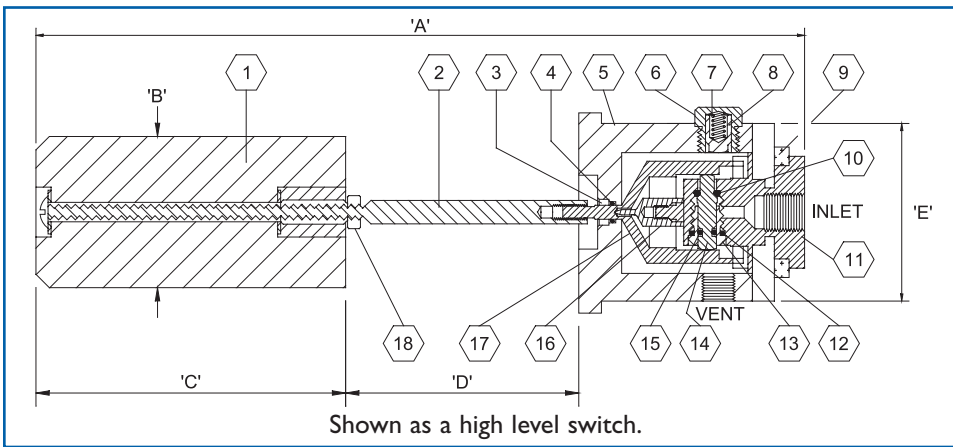
Pneumatic Flange Mount Level Switch

FEATURES

- 316 stainless steel construction (models to N.A.C.E. MR0175 available).
- Design has no deep cavities or recesses exposed to the process fluids for debris accumulation and is excellent for dirty fluid applications.
- Uses a patented pivot seal mechanism to transmit liquid buoyancy to the valve operation mechanism with the pivot completely isolated from the process fluid.
- Mode of operation ('HI' or 'LO') is easily changed and no re-calibration is required.
- Level adjustments cannot be easily tampered with after installation, making this switch well suited for critical applications.

GENERAL DESCRIPTION:

The Ruelco Flex Level Model '31C2' is a pneumatic liquid level switch. It incorporates a slip ring mounting feature providing it with the highest degree of sealing integrity. The sensor operates a pneumatic valve when the liquid in a tank or pressure vessel reaches a predetermined level. The "Flex Level" operates as either a high or low level sensor, the mode of operation is selected simply by rotating the valve body 180 degrees. The standard pneumatic valve is a two-way N.O. or N.C. valve which provides positive and fast system response. When used as a high level sensor, the valve will be N.C. when the liquid level is below the sensor. The valve for a low level sensor is N.O. when the liquid level is below the sensor. Three way 'BLOCK and BLEED' valve operation is possible with the addition of an orifice and a street tee.



Ordering Code: **31C2 X X X X 3 0**

BASE MODEL NUMBER	STANDARD MODEL	To NACE MR0175	POLYPROPYLENE DISPLACER	316 ST. STL. DISPLACER (2,160 PSI W.P.)	2-WAY VALVE	3-WAY VALVE	HI LEVEL OPERATION	LO LEVEL OPERATION
31C2	-	N	P	6	2	3	H	L
Flange Mount Pneumatic								

Parts List For Pneumatic Level Switch 31C2

Item	Qty.	Description	Material
1	1	Displacer Assembly	Polypropylene & 18-8 St. Stl.
2	1	Float Rod	316 St. Stl.
3	1	Body Seal Retainer	316 St. Stl.
4*	1	Body Seal	Fluorocarbon
5	1	Body	316 St. Stl.
6	1	Spring Cap	316 St. Stl.
7	1	Spring	Inconel
8	1	Spring Guide	Acetal
9	4	Socket Hd. Cap Screw	316 St. Stl.
10*	1	Valve Seat	Fluorocarbon
11	1	Valve Body	316 St. Stl.
12*	1	Valve Retainer Seal	Fluorocarbon
13	1	Valve Retainer	316 St. Stl.
14	1	Valve Poppet	316 St. Stl.
15*	1	Poppet Seal	Fluorosilicone
16	1	Pivot	304 St. Stl.
17	1	Cone	17-4 PH St. Stl.
18	1	Float Rod Nut	316 St. Stl.
19	—	Repair Kit	* Items

Dimensions Inch (MM)

'A'	10.06 (255.5)
'B'	2.00 (50.8)
'C'	4.10 (104.1)
'D'	2.96 (75.2)
'E'	2.37 (60.2)
Ports	1/4" NPT
Weight	3.3 Lbs. (1.5 Kg.)

Specifications

Max. Test Pressure PSI (BAR) @ 100 deg. F (37 deg. C)	2160 (149)	Ambient Temperature Range	-20 to 250 deg. F -29 to 122 deg. C	Max. Process Fluid Temperature	200 deg. F (93 deg. C)	Min. Specific Gravity	0.6	Max. Supply Pressure PSI (BAR)	50 (3.44)	C _v Factor	.16
--	------------	---------------------------	--	--------------------------------	---------------------------	-----------------------	-----	--------------------------------	-----------	-----------------------	-----