

Ruelco

AR-I Automatic Reset Relay Model 12A1



1-800-229-7835
ruelco@ruelco.com

AR-I

Automatic Reset Relay Model I2AI

FEATURES

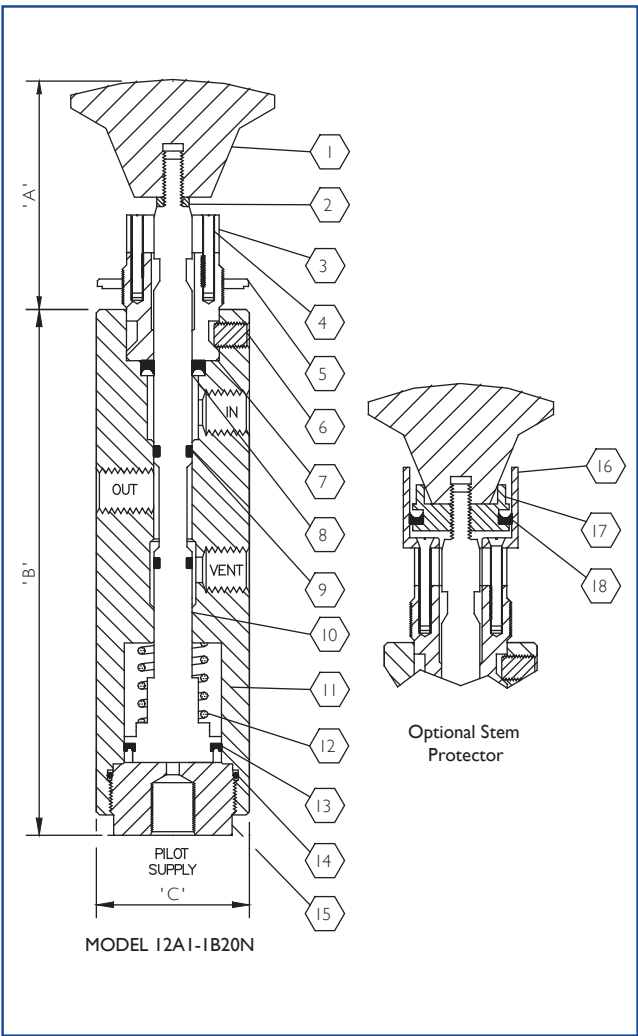
- 316 Stainless steel construction (models to N.A.C.E. MR0175 available).
- Easy to close with pilot signal pressures as high as 100 psi.
- Large Cv factor assures fast system response
- Viton and nitril seals are utilized for dependability.
- Design minimizes malfunctions due to supply system debris. Inconel X-750 springs assures dependability in corrosive environments.

GENERAL DESCRIPTION:

The Ruelco “AR-I” relay is a multi-pressure control valve for production control and safety systems. It functions as an automatic reset, pilot operated, normally closed, block and bleed valve.

Parts List For AR-I Relay

| ITEM | QTY. | DESCRIPTION | MATERIAL | PART No. |
|------|------|-------------------------------|---------------|------------|
| 1A | 1 | Black Knob | Phenolic | Z0-200-001 |
| 1B | — | Red Knob | Phenolic | Z0-200-002 |
| 1C | — | Green Knob | Phenolic | Z0-200-003 |
| 2 | 1 | Lock Nut | 316 St. Stl. | T6-08K-0F3 |
| 3 | 1 | Detent Replacement | Black Delrin | I0-034-000 |
| 4 | 2 | Screw | 316 St. Stl. | T3-632-0G3 |
| 5 | 1 | Panel Mount Nut | 316 St. Stl. | I0-006-000 |
| 6 | 3 | Set Screw | 316 St. Stl. | T1-08K-0C3 |
| 7 | 1 | Mounting Head | 316 St. Stl. | I0-007-000 |
| 8* | 1 | Head Seal | Nitril | NU-204-70H |
| 9* | 2 | Shaft Seal | Viton | V0-009-90T |
| 10 | 1 | Shaft Assembly | 316 St. Stl. | I4-023-000 |
| 11 | 1 | Body | 316 St. Stl. | I0-020-000 |
| 12A | 1 | 20 PSI. Spring | Inconel X-750 | I0-024-000 |
| 12B | — | 30 PSI. Spring | Inconel X-750 | I0-017-000 |
| 13* | 1 | Piston Seal | Nitril | NU-209-70H |
| 14* | 1 | Base Seal | Viton | V0-025-75H |
| 15 | 1 | Base | 316 St. Stl. | I4-021-000 |
| 16 | 1 | Stem Protector Housing | Black Delrin | I0-015-000 |
| 17 | 1 | Seal Washer | Black Delrin | I0-016-000 |
| 18# | 1 | Stem Protector Seal | Nitril | NU-210-70H |
| 19 | — | Repair Kit w/o Stem Protector | * Items | I4-013-0A0 |
| 20 | — | Repair Kit w/ Stem Protector | * & # Items | I4-026-000 |



Specifications PSI. (Bar)

| | |
|--|--|
| Valve Body Max. W.P. | 150 (10.3) |
| Optional Max. W.P. | 250 (17.2) |
| Ambient Temperature Range | -20° To 250° F -20° To 122° C |
| Minimum Pilot Signal Pressure to Hold Relay Open | 27 (1.9) With 20 PSI Spring 35 (2.4) With 30 PSI Spring |
| Cv Factor | 1.7 |

Dimensions Inch (MM)

| | |
|----------------------|---------------------|
| "A" (Closed/ Open) | 2.36/2.73 (60/69.3) |
| "B" | 5.18 (132) |
| "C" | 1.5 (38.1) |
| Port Size | 1/4" NPT |
| Panel Mount Hole | 1.0 (25.4) |
| Max. Panel Thickness | .18 (4.6) |
| Weight | 2.5 lbs (1.14 Kg) |

Ordering Code: I2AI X I X X X X

BASE MODEL NUMBER

Standard Corrosive Service - (-)
N.A.C.E. Option - N

Black Knob - B
Red Knob - R
Green Knob - G

0 - Without Panel Mount Nut
N - With Panel Mount Nut

0 - Without Stem Protector
P - With Stem Protector

2 - 20 Psi. Closing Spring
3 - 30 Psi. Closing Spring

While this information is presented in good faith and believed to be accurate, Ruelco, Inc. does not guarantee satisfactory results from reliance upon such information. Nothing contained herein is to be construed as a warranty or guarantee, expressed or implied, regarding the performance, merchantability, and fitness with respect to the products. Ruelco, Inc. reserves the right, without notice, to alter or improve the designs or specifications of the products described herein.