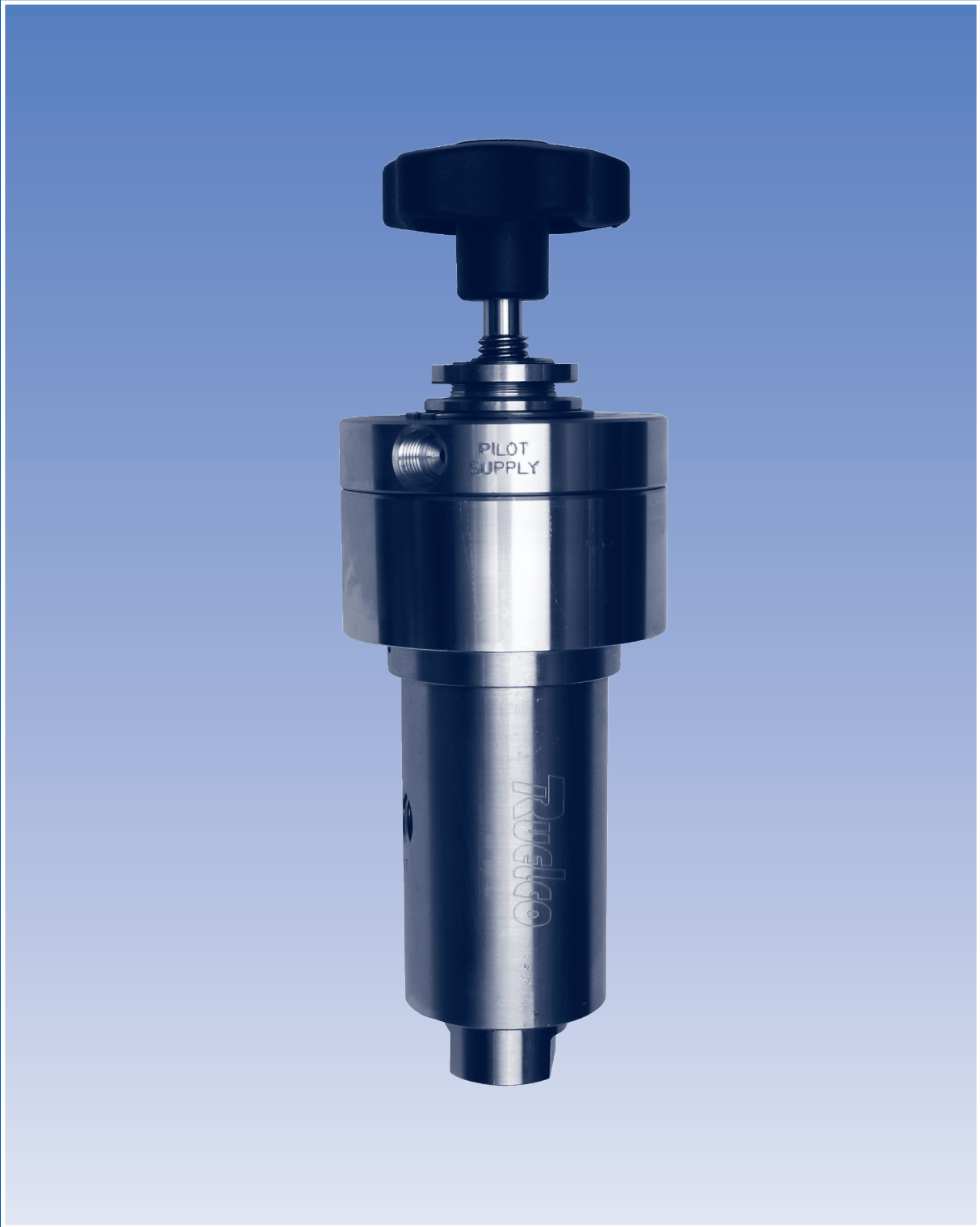


Ruelco



SC-1 SSSCSV 3-Way Interface Valve Model 8200

1-800-229-7835
ruelco@ruelco.com

SC-I SSSCV 3-Way Interface Valve

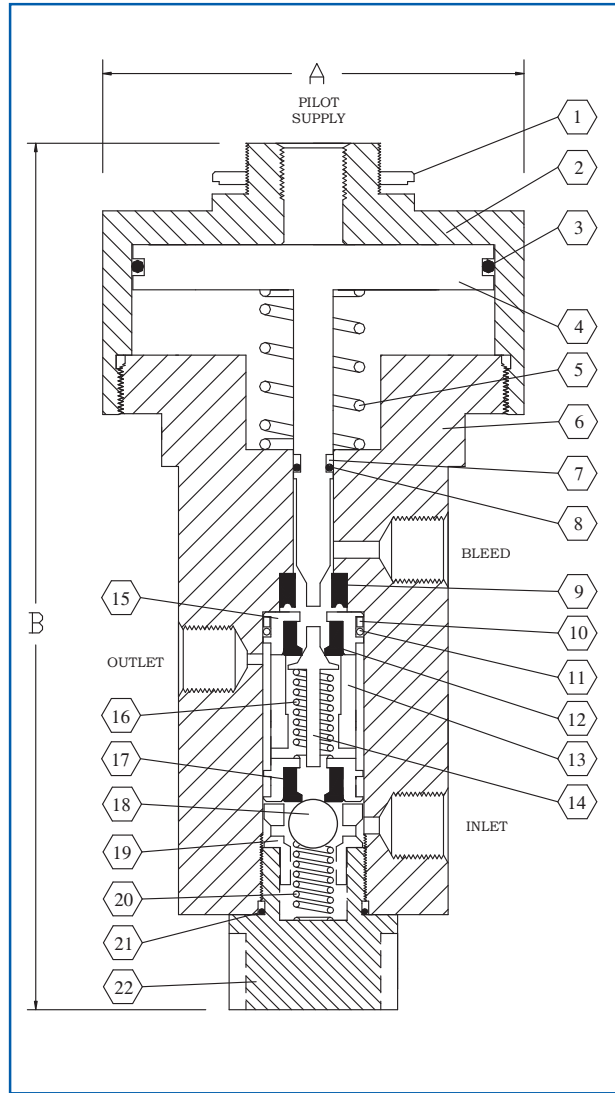
Model 8200

FEATURES

- 316 Stainless steel construction (models to N.A.C.E. MR0175 available).
- Large Cv factor assures a fast system response
- All soft seal design
- Design minimizes malfunctions due to supply system debris.
- For downhole applications, ensuring positive shut off.

GENERAL DESCRIPTION:

The Ruelco SC-I SSSCV Interface Valve is a normally closed 3-way block and bleed hydraulic controller. The valve allows the system to control pressures as high as 10,000 PSI with a pilot supply pressure of 100 PSI. The unique soft seal design ensures zero leakage and also prevents damage from foreign particles. The shut off spool ensures that the outlet fluid cannot leak back through the bleed port after the valve has been shut. Ruggedly constructed for years of reliable service.



Parts List For Interface Valve

ITEM	QTY.	DESCRIPTION	MATERIAL	PART NO.
1	1	Panel Mount Nut	Stainless Steel	10-006-000
2	1	Cap	Stainless Steel	81-001-000
3*	1	Piston Seal	Viton	V0-145-75H
4	1	Spool Assembly	Stainless Steel	82-007-000
5	1	Piston Spring	Music Wire	81-014-000
6	1	Body	Stainless Steel	82-001-000
7*	1	Spool Back-Up Seal	Teflon	TF-008-75H
8*	1	Spool Seal	Buna	NO-008-70H
9*	1	Shaft Seal	Fluoromyte	FM-250-250
10*	2	Sleeve Back-Up Seal	Teflon	TF-016-75H
11*	2	Sleeve Seal	Buna	NO-016-75H
12*	1	Block Seal	Delrin	82-005-000
13	1	Shut Off Sleeve	Stainless Steel	82-003-000
14	1	Shut Off Piston	Stainless Steel	82-004-000
15	1	Top Sleeve	Stainless Steel	82-002-000
16	1	Shut Off Spring	Stainless Steel	82-008-000
17*	1	Ball Seal	Delrin	81-011-000
18*	1	Ball	Tungsten Carbide	BL-375-10M
19	1	Bottom Sleeve	Stainless Steel	81-005-000
20	1	Inlet Spring	Stainless Steel	81-015-000
21*	1	Bottom Cap Seal	Buna	NO-017-75H
22	-	Bottom Cap	Stainless Steel	81-004-000
23	-	Repair Kit	* Items	82-009-000

Instrument Supply

Max. Supply Pressure	200 PSI.
Outlet Orifice Size	.125 IN.
Timer Circuit	0 - 60 sec. Required

Dimensions

A	3.125 IN (79.4 mm)
B (MAX.)	6.42 IN (163.1 mm)
Panel Mount Hole	1.0 IN (25.4 mm)
Valve Ports	1/4" FNPT
Weight	5.1 LBS (2.31 KG)

Switch Specifications

Valve Type	3-Way
Ambient Temperature Range	-20° TO 250° F -20° TO 122° C
Sensor Type	Piston
Max. Oper. Pressure	10,000 PSI (680 BAR)
Burst Pressure	20,000 PSI. (1380 BAR)

Ordering Code: 8200 - 10000

* PATENT PENDING *

SC-I SSCSV 3-Way Interface Valve with Override

Model 8200

FEATURES

- 316 Stainless steel construction (models to N.A.C.E. MR0175 available).
- Large Cv factor assures a fast system response
- All soft seal design
- Design minimizes malfunctions due to supply system debris.
- For downhole applications, ensuring positive shut off.

GENERAL DESCRIPTION:

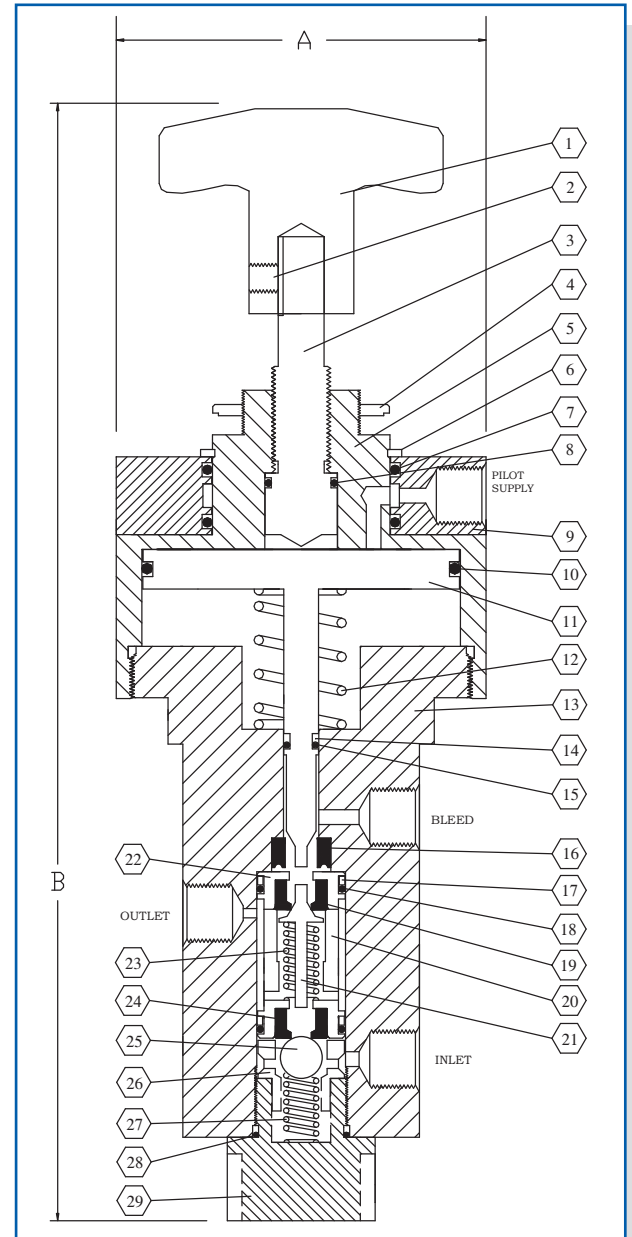
The Ruelco SC-I SSCSV Interface Valve is a normally closed 3-way block and bleed hydraulic controller. The valve allows the system to control pressures as high as 10,000 PSI with a pilot supply pressure of 100 PSI. The unique soft seal design ensures zero leakage and also prevents damage from foreign particles. The shut off spool ensures that the outlet fluid cannot leak back through the bleed port after the valve has been shut. Ruggedly constructed for years of reliable service.

Parts List For Interface Valve

ITEM	QTY.	DESCRIPTION	MATERIAL	PART NO.
1	1	Handle	Technopolymer	81-012-000
2	1	Set Screw	Stainless Steel	T1-08K-0C3
3	1	Override Stem	Stainless Steel	81-010-000
4	1	Panel Mount Nut	Stainless Steel	10-006-000
5	1	Override Cap	Stainless Steel	81-002-000
6	1	Snap Ring	Stainless Steel	SH-150-050
7*	1	Air Ring O-ring	Viton	V0-128-75H
8*	2	Override Seal	Viton	V0-013-75H
9	1	Air Ring	Stainless Steel	81-013-000
10*	1	Piston Seal	Viton	V0-145-75H
11	1	Spool Assembly	Stainless Steel	82-007-000
12	1	Piston Spring	Stainless Steel	81-014-000
13	1	Body	Stainless Steel	82-001-000
14*	1	Spool Back-Up Seal	Teflon	TF-008-75H
15*	1	Spool Seal	Buna	N0-008-70H
16*	1	Shaft Seal	Fluoromyte	FM-250-250
17*	1	Sleeve Back-Up Seal	Teflon	TF-016-75H
18*	2	Sleeve Seal	Buna	N0-016-75H
19*	2	Block Seal	Delrin	82-005-000
20	1	Shut Off Sleeve	Stainless Steel	82-003-000
21	1	Shut Off Piston	Stainless Steel	82-004-000
22	1	Top Sleeve	Stainless Steel	82-002-000
23	1	Shut Off Spring	Stainless Steel	82-008-000
24*	1	Ball Seal	Delrin	81-011-000
25*	1	Ball	Tungsten Carbide	BL-375-10M
26	1	Bottom Sleeve	Stainless Steel	81-005-000
27	1	Inlet Spring	Stainless Steel	81-015-000
28*	1	Bottom Cap Seal	Buna	N0-017-75H
29	1	Bottom Cap	Stainless Steel	81-004-000
30	-	Repair Kit	* Items	82-010-000

Dimensions

A	3.125 IN (79.4 mm)
B (MAX.)	9.25 IN (234.9 mm)
Panel Mount Hole	1.0 IN (25.4 mm)
Valve Ports	1/4" FNPT
Weight	7.15 LBS (3.25 KG)



Instrument Supply

Max. Supply Pressure	200 PSI.
Outlet Orifice Size	.125 IN.
Timer Circuit	0 - 60 sec. Required

Switch Specifications

Valve Type	3-Way
Ambient Temperature Range	-20° TO 250° F -20° TO 122° C
Sensor Type	Piston
Max. Oper. Pressure	10,000 PSI (680 BAR)
Burst Pressure	20,000 PSI. (1380 BAR)

Ordering Code: 8200 - 10000

* PATENT PENDING *



Hydraulic Controllers

SS-H Hydraulic Pilot

VC-2 Velocity Check Valve

RQ-1 (1/4") Quick Exhaust

RQ-2 (1/2") Quick Exhaust

Interface Valve

RD-1 Dump Valve

RD-H Dump Valve

Hydraulic Tattletale Indicator