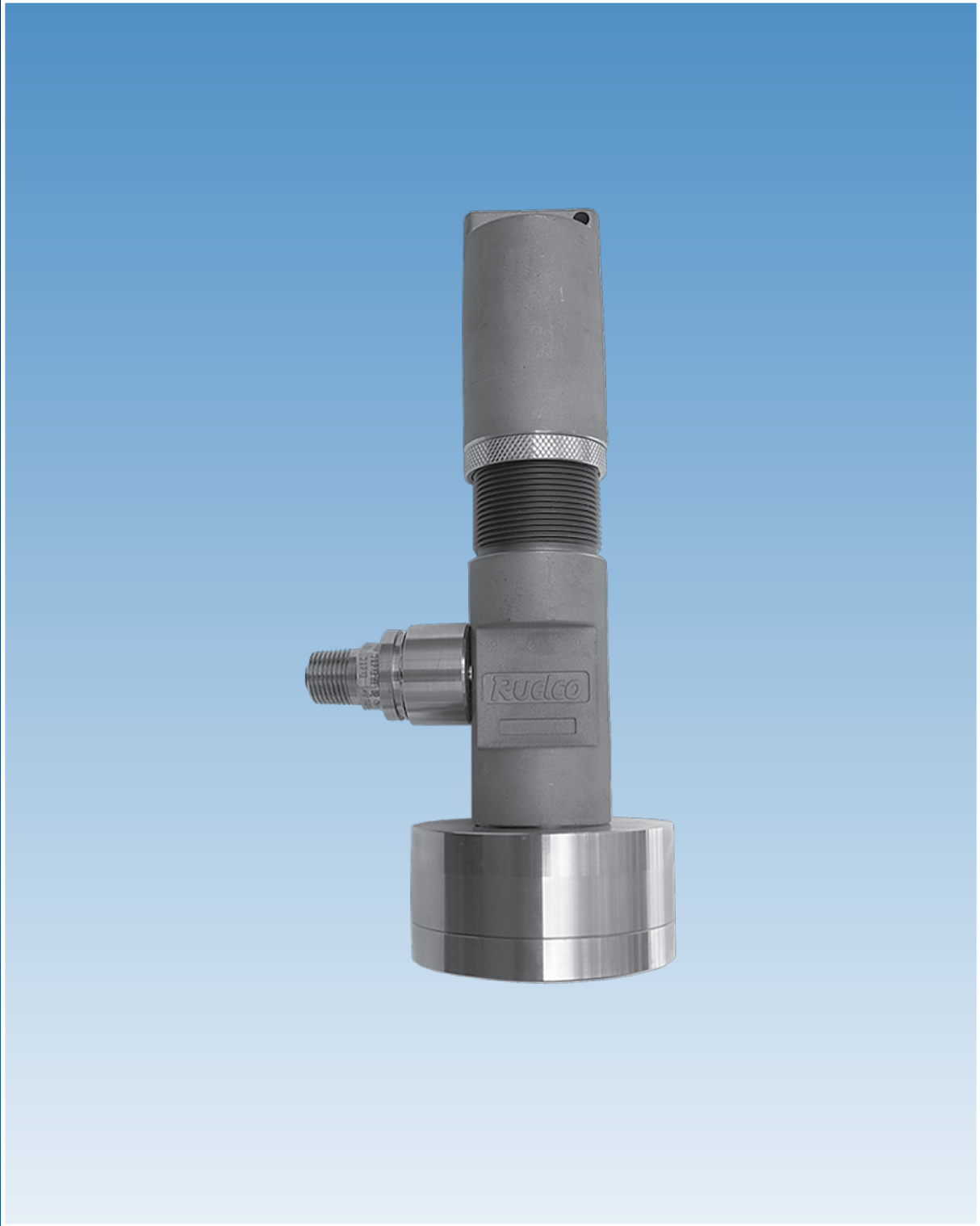


Ruelco



SS-E Differential Pressure Switch

1-800-229-7835
ruelco@ruelco.com

SS-E Differential

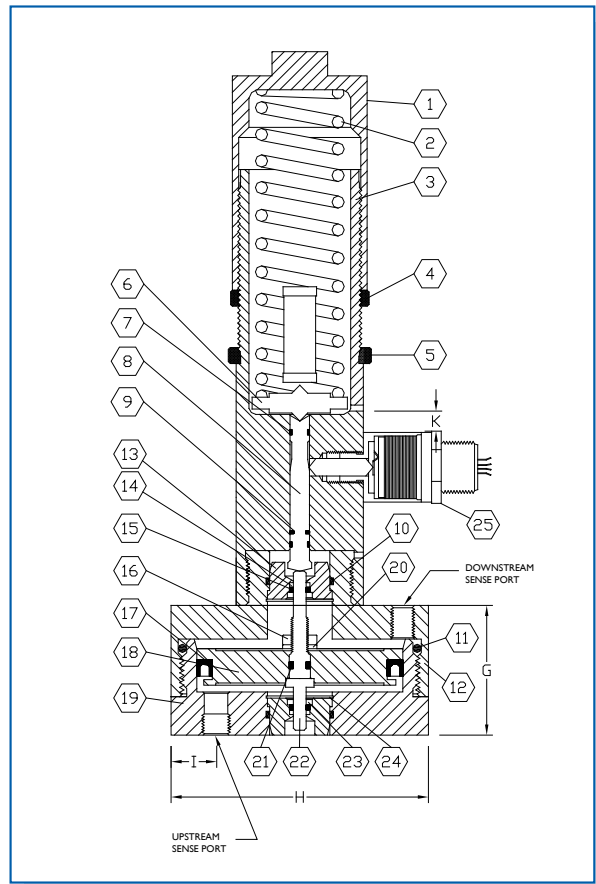
Pneumatic Differential Pressure Switch

FEATURES

- 316 stainless steel construction (models to N.A.C.E. MR0175 available).
- Differential pressure range from .5-80 PSI.
- Holds constant and accurate set points.
- Designed for 1% plus or minus repeatability on set points.
- Minimum deadband between trip and reset pressure.
- Spring may be replaced with instrument and sensing pressure present in the sensor.
- Vent above sensing piston prevents high pressure from entering instrument supply should a piston seal leak develop.
- Optional tamper proof lockout device available.
- Optional mounting brackets available.
- SPDT or DPDT microswitches available.

GENERAL DESCRIPTION:

The Ruelco SS-E electric differential pressure switch is a direct acting valve that is operated by pressure acting on a piston opposing an adjustable spring force. It functions as either a normally closed or normally open valve, depending on the contacts used on the microswitch. Pressure applied to the sense port will cause the valve to operate.



Parts List For SS-E Differential Pressure Switch

Item	Qty.	Description	Material	Part No.
1	1	SPRING CAP	STAINLESS STEEL	41-009-0A0
2A	1	SPRING (BLUE)	ASTM-401	41-012-000
2B	1	SPRING (RED)	ASTM-401	41-013-000
2C	1	SPRING (SILVER)	ASTM-401	41-014-000
2D	1	SPRING (GREEN)	INCONEL	41-019-000
2E	1	SPRING (YELLOW)	INCONEL	41-020-000
2F	1	SPRING (PURPLE)	INCONEL	41-021-000
3	1	BODY	STAINLESS STEEL	4E-001-000
4	1	LOCK RING	STAINLESS STEEL	41-015-000
5	1	PANEL MOUNT RING (OPTIONAL)	STAINLESS STEEL	41-023-000
6	1	SPRING PLATE	STAINLESS STEEL	41-008-040
7*	2	SPOOL GUIDE RING	DELRI	4E-004-000
8	1	SPOOL F/SS-E	STAINLESS STEEL	4E-005-000
9*	1	SPOOL O-RING	VITON	VO-008-75T
10*	2	GUIDE SLEEVE SEAL	VITON	VO-020-75H
11*	1	BODY SEAL	VITON	VO-237-75H
12	1	UPPER HOUSING	STAINLESS STEEL	4D-001-0A0
13	2	GUIDE SLEEVE	STAINLESS STEEL	4D-004-000
14*	2	BACK-UP RING	TEFLON	TB-008-00C
15*	2	SHAFT SEAL	FLUOROSILICONE	FO-008-70T
16	1	HEX NUT	STAINLESS STEEL	T6-08K-0G3
17*	1	PISTON SEAL	VITON	VU-334-75T
18	1	PISTON	STAINLESS STEEL	4D-003-000
19	1	LOWER HOUSING	STAINLESS STEEL	4D-002-000
20	1	LOCK WASHER	STAINLESS STEEL	WA-0X0-H43
21*	1	PISTON/SHAFT SEAL	VITON	VO-008-75H
22	1	SHAFT	STAINLESS STEEL	4D-005-000
23	2	SEAL RETAINER	STAINLESS STEEL	4D-006-000
24	2	RETAINER RING	STAINLESS STEEL	S2-910-903
25	1	SPDT SWITCH ASSEMBLY	STAINLESS STEEL	38-027-000
	-	DPDT SWITCH ASSEMBLY	STAINLESS STEEL	38-028-000
26	-	REPAIR KIT	* ITEMS	4D-008-000

Dimensions P.S.I. (BAR)

SPRING CODES (COLOR)		RANGE CHART		
		DIFFERENTIAL PRESSURE RANGE PSI (BAR)		
STD. SPRING	INCONEL SPRING	.5-20 (.03-1.4)	4-40 (.3-2.75)	10-80 (.7-5.5)
B (BLUE)	G (GREEN)	X		
R (RED)	Y (YELLOW)		X	
S (SILVER)	P (PURPLE)			X

Dimensions Inch (MM)

G	1.62 (41.1)
H	3.75 (92.3)
I	3.75 (92.3)
K	0.90 (22.9)
Sense Ports Assy. Wt.	1/8" NPT(F) 8.9 LBS (4.05 KG.)

Specifications

Max. Sensor HSG. Test Pressure PSI (BAR) @ 100°F (37°C)	Maximum Differential Pressure PSI (BAR) @ 100°F (37°C)	Ambient Temperature Range	Max. Process Fluid Temperature	Set Point Range PSI (BAR)	Switch Type	AC Rating	DC Rating
2000 (138)	1500 (103)	-20 to 167°F -29 to 75°C	250°F 122°C	.5 - 80 (.28 - 5.5)	SPDT or DPDT	250 Volts or 5 Amps	30 Volts or 5 Amps

Ordering Code: **4E02 X D X 0 0 0**

Base Model Number

Standard Corrosive Service - (-)
N.A.C.E. Option - N

Spring Code (See Range Chart)