

Ruelco



SS-H Hydraulic Pressure Switch Low

Model 4HLL2

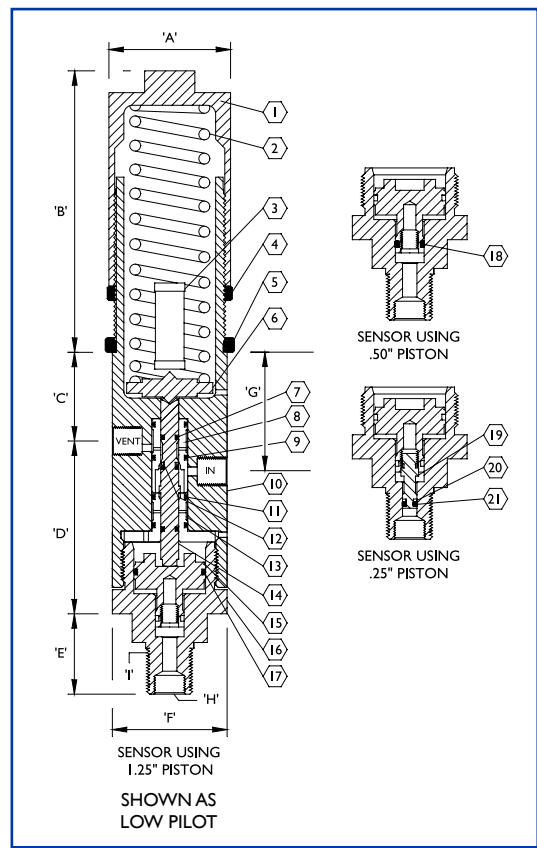
1-800-229-7835
ruelco@ruelco.com

SS-H

Hydraulic Pressure Switch Low Model 4HL2

Parts List For Pressure Switch Model 4HL2

| Item | Qty. | Description | Material | Part No. |
|------|------|---------------------------------|-----------------|------------|
| 1 | 1 | Spring Cap | Stainless Steel | 4H-009-000 |
| 2A | 1 | Spring (Blue) | ASTM-401 | 41-012-000 |
| 2B | --- | Spring (Red) | ASTM-401 | 41-013-000 |
| 2C | --- | Spring (Silver) | ASTM-401 | 41-014-000 |
| 2D | --- | Spring (Green) | Inconel | 41-019-000 |
| 2E | --- | Spring (Yellow) | Inconel | 41-020-000 |
| 2F | --- | Spring (Purple) | Inconel | 41-021-000 |
| 3 | 1 | Parts Tube | - | 42-025-000 |
| 4 | 1 | Lock Ring | Stainless Steel | 41-015-000 |
| 5 | 1 | Panel Mount Ring (Optional) | Stainless Steel | 41-023-000 |
| 6 | 1 | Spring Plate | Stainless Steel | 41-008-0A0 |
| 7* | 2 | Spool O-Ring | Buna-N | NO-008-90H |
| 8 | 1 | Top Sleeve | Stainless Steel | 4H-002-000 |
| 9* | 2 | Top Sleeve O-Ring | Buna-N | NO-014-75H |
| 10* | 1 | Center Seal | Urethane | U0-008-90H |
| 11 | 1 | Body | Stainless Steel | 4H-001-0L0 |
| 12* | 2 | Bottom Sleeve O-Ring | Buna-N | NO-014-75H |
| 13 | 1 | Bottom Sleeve | Stainless Steel | 4H-003-000 |
| 14 | 1 | Spool | Stainless Steel | 4H-004-0L0 |
| 15 | 1 | 1.25" / .50" Piston | Stainless Steel | 42-005-000 |
| 16 | 1 | 1.25" / .50" / .25" Sensor Base | Stainless Steel | 41-004-0A0 |
| 17* | 1 | O-Ring F/ 1.25" Piston | Viton | VO-024-75T |
| 18* | 1 | O-Ring F/ .5" Piston | Viton | VO-012-75T |
| 19 | 1 | .25" Piston (Optional) | Stainless Steel | 41-011-0A0 |
| 20* | 1 | Backup F/ .25" Piston | Teflon | TB-006-0B0 |
| 21* | 1 | O-Ring F/ .25" Piston | Viton | VO-006-75T |
| 22 | 1 | Repair Kit | * Items | 4H-005-0B0 |



Dimensions Inch (MM)

| | |
|------------------|------------------|
| A | 2.12 (53.8) |
| B (Max) | 6.13 (155.7) |
| C | 1.55 (39.4) |
| D | 1.98 (50.3) |
| E | 1.40 (35.6) |
| F | 2.00 (50.8) |
| G | 2.08 (52.8) |
| H | 1/4" FNPT |
| I | 1/2" MNPT |
| Panel Mount Hole | 1.875 (48.0) |
| Valve Ports | 1/4" FNPT |
| Weight* | 4.9 lbs (2.3 kg) |

* For switch and 1.25"/.50"/.25" sensor base

Switch Specifications

| | |
|---------------------|--|
| Valve Type | 2-Way |
| Setpoint Deviation | ± 3% |
| Max. Instr. Press. | 6,000 PSI (414 BAR) |
| Ambient Temp. Range | -20 to 250 deg. F -29 to 122 deg. C |
| Cv Factor | .12 |

1.25"/.50"/.25" Switch Sensor Specifications

| | |
|-------------------|--|
| Sensor Type | Piston |
| Max. Oper. Press. | 10,000 PSI (690 BAR) |
| Burst Pressure | 20,000 PSI (1380 BAR) |
| Temperature Range | -20 to 250 deg. F -29 to 122 deg. C |

Ordering Code: 4HL2 X X X 0 0 0

BASE MODEL NUMBER

Standard Corrosive Service - (-)
N.A.C.E. Option - N

SPRING CODE (see range chart)

PISTON CODE (see range chart)

| Spring Codes (COLOR) | | Available Ranges - PSI (BAR) | | | | | | | | | | | | | | |
|----------------------|----------------|------------------------------|-------------------|-------------------|--------------------|------------------------|----------------------|------------------------|--------------------------|-----------------------|-----------------------|------------------------|-------------------------|------------------------|------------------------|--------------------------|
| | | .5-20 (.03-1.4) | 4-40 (.3-2.75) | 10-80 (.7-5.5) | 10-115 (.7-7.9) | 20-230 (1.4 - 15.8) | 50-450 (3.4 - 31) | 200-750 (13.8-51.8) | 500-1500 (34.5-103.5) | 1000-3000 (69-207) | 1000-3000 (69-207) | 2000-5000 (138-345) | 5000-10000 (345-689) | 2000-5000 (138-345) | 3500-9000 (241-620) | 8500-20000 (586-1380) |
| STANDARD SPRING | INCONEL SPRING | X | | | X | | | X | | | X | | | X | | |
| B (Blue) | G (Green) | | X | | | X | | X | | | X | | | | X | |
| R (Red) | Y (Yellow) | | | X | | | | | | | X | | | | | X |
| S (Silver) | P (Purple) | | | | X | | | X | | X | | X | | | | X |
| Piston Diameter | | 3.0" | 3.0" | 3.0" | 1.25" | 1.25" | 1.25" | .50" | .50" | .50" | .25" | .25" | .25" | .187" | .187" | .187" |
| Piston Code | | 0 | 0 | 0 | 1 | 1 | 1 | 2 | 2 | 2 | 3 | 3 | 3 | 4 | 4 | 4 |
| | | OPTIONAL BASE | | | | OPTIONAL PISTON | | | | | | OPTIONAL BASE | | | | |