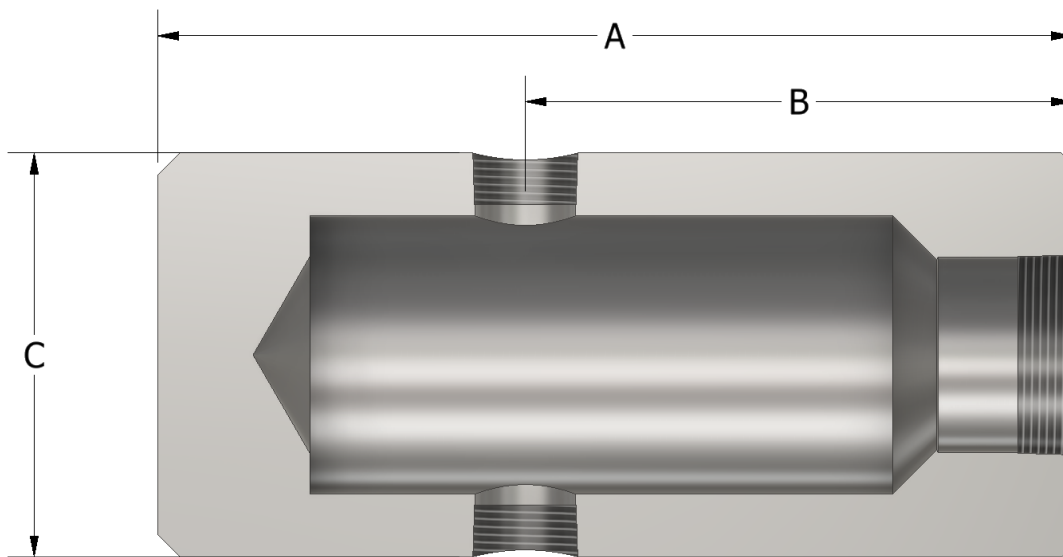


OPERATION

Ruelco Model Level Switch Cages are used for installing the Ruelco Level Switch externally on tanks or pressure vessels. The compact size of these units permit efficient bridle mounting of multiple switches using a minimum number of vessel connections. Standard cages use solid bar non-welded construction allowing them to withstand the most severe operating environments. An NPT drain port can also be added to the back of the cage for horizontal mounting.

FEATURES

- Coated 1018 or 316 stainless steel solid bar construction
- ANSI 600 or ANSI 900



DIMENSIONS

A	10.20" (259 mm)
B	6.10" (155 mm)
C	4.50" (114.3 mm)
LEVEL SWITCH CONNECTION	2" NPT
BRIDLE CONNECTIONS	1" NPT

PHONE: 504-340-0055
FAX: 504-340-0056
EMAIL: SALES@RUELCO.COM

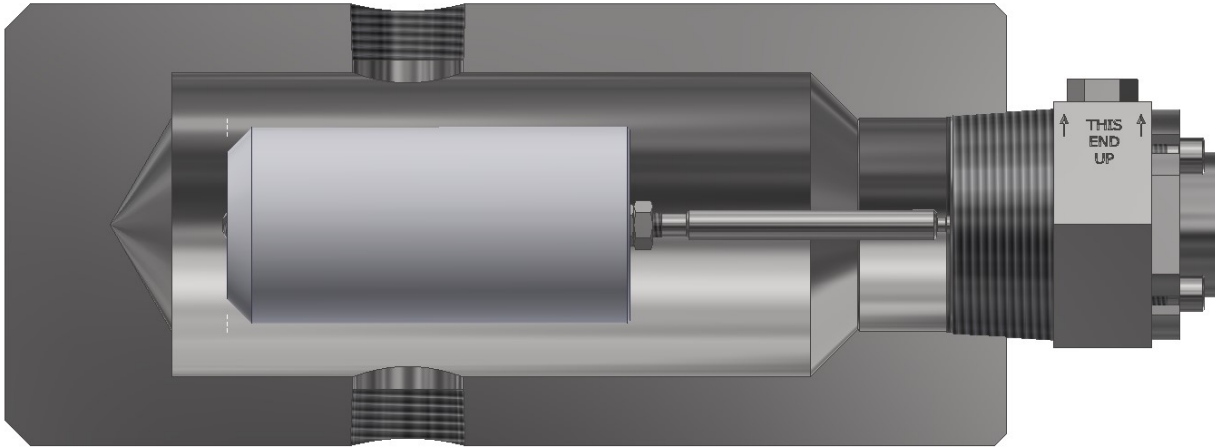
1209 DISTRIBUTORS ROW
NEW ORLEANS, LA 70123

NPT MOUNT EXTERNAL CAGE

SPECIFICATIONS

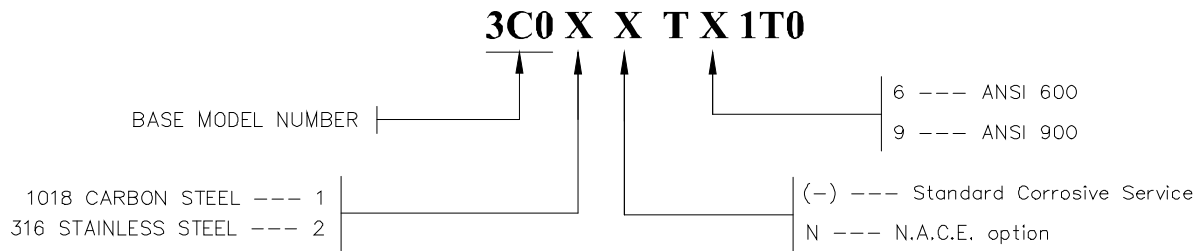
MAXIMUM WORKING PRESSURE @ 100° F	2,160 PSI (149 BAR)
MAXIMUM TEST PRESSURE @ 100° F	3,240 PSI (223.4 BAR)

NPT MOUNT EXTERNAL CAGE



SHOWN WITH LEVEL SWITCH INSTALLED IN CAGE

ORDERING CODE



PHONE: 504-340-0055
 FAX: 504-340-0056
 EMAIL: SALES@RUELCO.COM

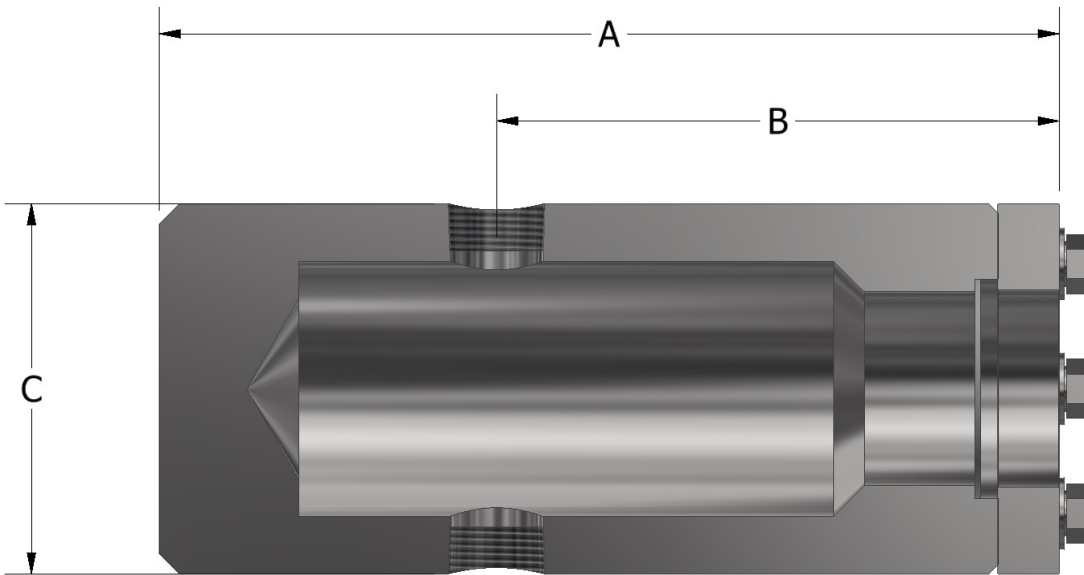
1209 DISTRIBUTORS ROW
 NEW ORLEANS, LA 70123

OPERATION

Ruelco Model Level Switch Cages are used for installing the Ruelco Level Switch externally on tanks or pressure vessels. The compact size of these units permit efficient bridle mounting of multiple switches using a minimum number of vessel connections. Standard cages use solid bar non-welded construction allowing them to withstand the most severe operating environments. An NPT drain port can also be added to the back of the cage for horizontal mounting.

FEATURES

- Coated 1018 or 316 stainless steel solid bar construction
- ANSI 600 or ANSI 900



FLANGE MOUNT EXTERNAL CAGE

DIMENSIONS

A	10.95" (278.1 mm)
B	6.85" (174 mm)
C	4.50" (114.3 mm)
LEVEL SWITCH CONNECTION	RUELCO FLANGE
BRIDLE CONNECTIONS	1" NPT

PHONE: 504-340-0055
 FAX: 504-340-0056
 EMAIL: SALES@RUELCO.COM

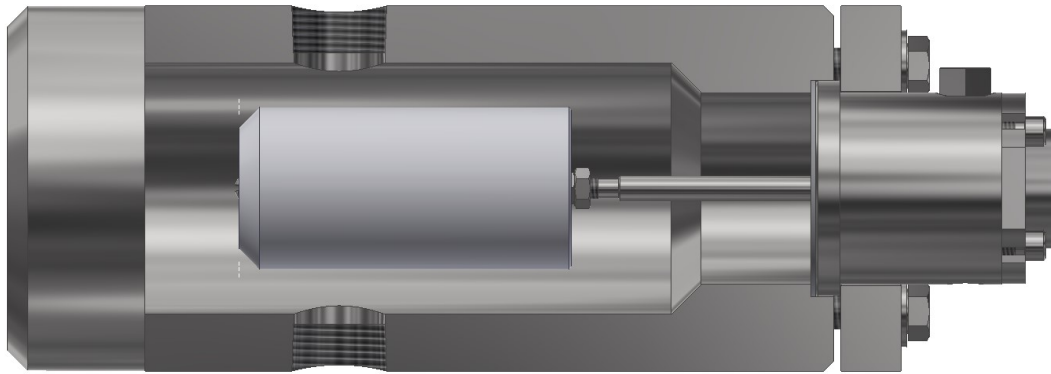
1209 DISTRIBUTORS ROW
 NEW ORLEANS, LA 70123

PARTS LIST

ITEM	QUANTITY	DESCRIPTION	MATERIAL
1	1	FLANGE CAGE	ASTM A-108 OR 316 ST. STL.
2	1	FLANGE GASKET	BLUE-GARD TM OR 316 ST. STL.
3	1	MOUNTING RING	ASTM A-108 OR 316 ST. STL.
4	6	FLAT WASHER	CARBON STEEL OR 316 ST. STL.
5	6	HEX HEAD BOLT	SAE GRADE 8 OR 316 ST. STL.

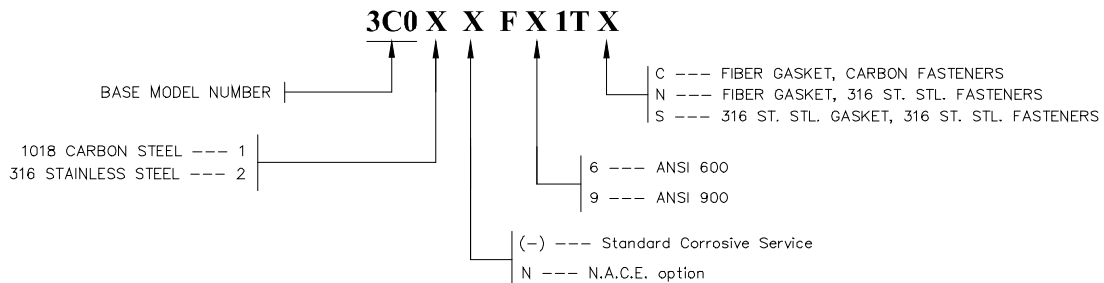
SPECIFICATIONS

MAXIMUM WORKING PRESSURE @ 100° F	2,160 PSI (149 BAR)
MAXIMUM TEST PRESSURE @ 100° F	3,240 PSI (223.4 BAR)



SHOWN WITH LEVEL SWITCH INSTALLED IN CAGE

ORDERING CODE



PHONE: 504-
340-0055
FAX: 504-340-0056

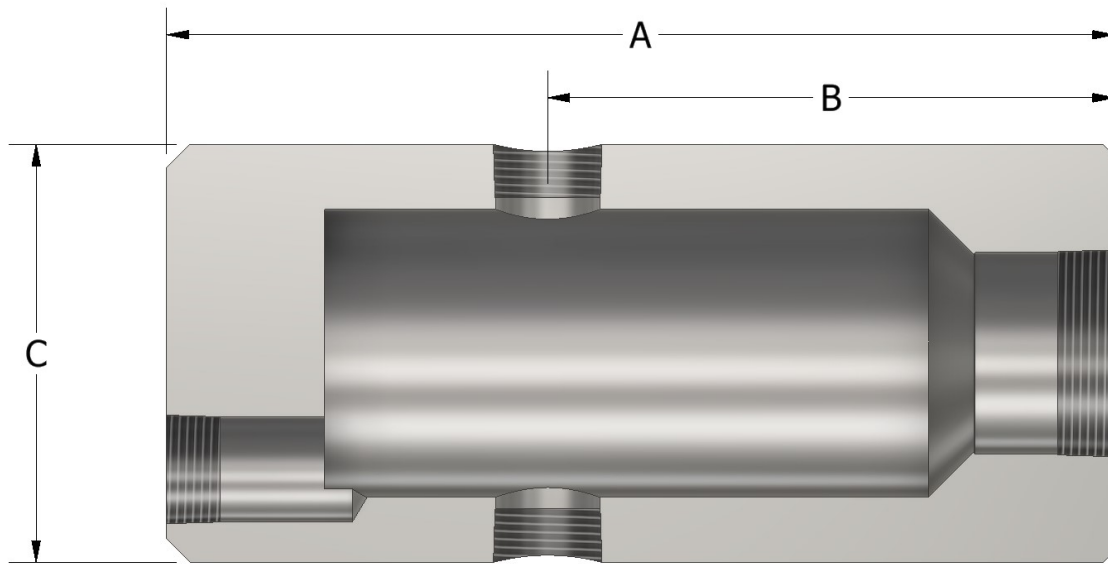
1209 DISTRIBUTORS ROW
NEW ORLEANS, LA 70123

OPERATION

Ruelco Model Level Switch Cages are used for installing the Ruelco Level Switch externally on tanks or pressure vessels. The compact size of these units permit efficient bridle mounting of multiple switches using a minimum number of vessel connections. Standard cages use solid bar non-welded construction allowing them to withstand the most severe operating environments. An NPT drain port can also be added to the back of the cage for horizontal mounting.

FEATURES

- Coated 1018 or 316 stainless steel solid bar construction
- ANSI 600 or ANSI 900



DIMENSIONS

A	10.20" (259 mm)
B	6.10" (155 mm)
C	4.50" (114.3 mm)
LEVEL SWITCH CONNECTIONS	2" NPT
BRIDLE CONNECTIONS	1" NPT

SPECIFICATIONS

MAXIMUM WORKING PRESSURE @ 100° F	2,160 PSI (149 BAR)
MAXIMUM TEST PRESSURE @ 100° F	3,240 PSI (223.4 BAR)

ORDERING CODE

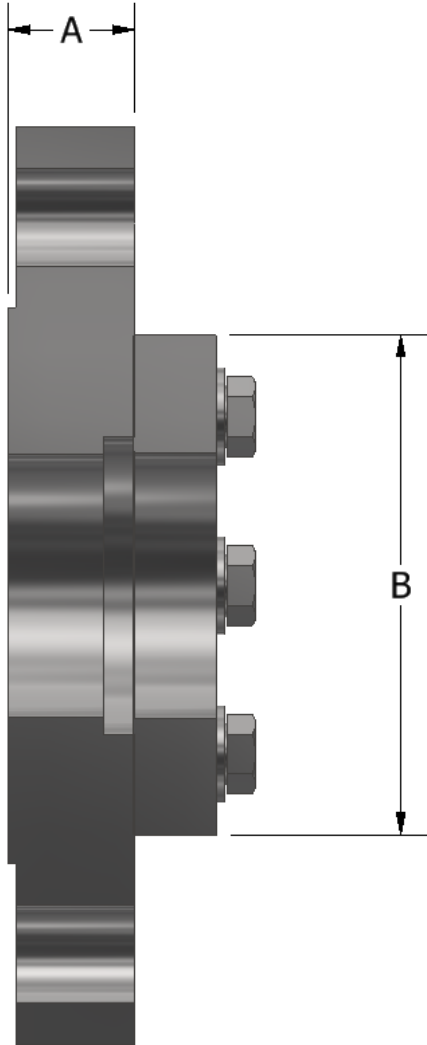
3C01SA0002

PHONE: 504-340-0055
 FAX: 504-340-0056
 EMAIL: SALES@RUELCO.COM

1209 DISTRIBUTORS ROW
 NEW ORLEANS, LA 70123

OPERATION

Ruelco Model External Mount Flanges are used for installing the Ruelco Level Switch externally on tanks or pressure vessels to a mating flange. Any ANSI or DIN flange can be machined to exacting specifications for the Ruelco Level Switch.



FEATURES

- Coated 1018 or 316 stainless steel solid bar construction
- Any standard size ANSI or DIN flange can be used

DIMENSIONS

A	FLANGE DEPENDANT
B	4.50" (114.3 mm)
LEVEL SWITCH	RUELCO FLANGE

EXTERNAL FLANGE MOUNT

PHONE: 504-340-0055
FAX: 504-340-0056
EMAIL: SALES@RUELCO.COM

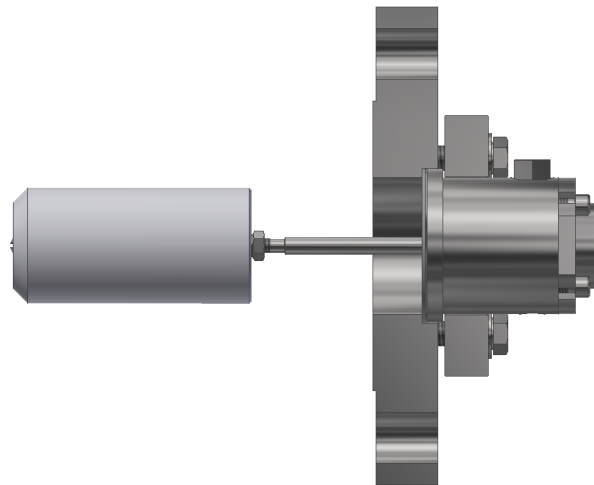
1209 DISTRIBUTORS ROW
NEW ORLEANS, LA 70123

PARTS LIST

ITEM	QUANTITY	DESCRIPTION	MATERIAL
1	1	ANSI OR DIN FLANGE	ASTM A-108 OR 316 ST. STL.
2	1	FLANGE GASKET	BLUE-GARD TM OR 316 ST. STL.
3	1	MOUNTING RING	ASTM A-108 OR 316 ST. STL.
4	6	FLAT WASHER	CARBON STEEL OR 316 ST. STL.
5	6	HEX HEAD BOLT	SAE GRADE 8 OR 316 ST. STL.

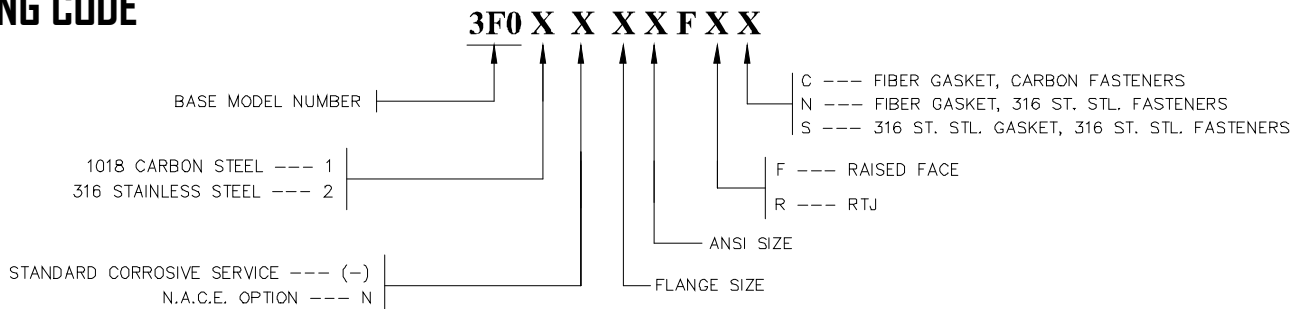
SPECIFICATIONS

MAXIMUM WORKING PRESSURE @ 100° F	2,160 PSI (149 BAR)
MAXIMUM TEST PRESSURE @ 100° F	3,240 PSI (223.4 BAR)



SHOWN WITH LEVEL SWITCH INSTALLED IN FLANGE

ORDERING CODE



PHONE:
504-340-0055
FAX: 504-340-0056

1209 DISTRIBUTORS ROW
NEW ORLEANS, LA 70123