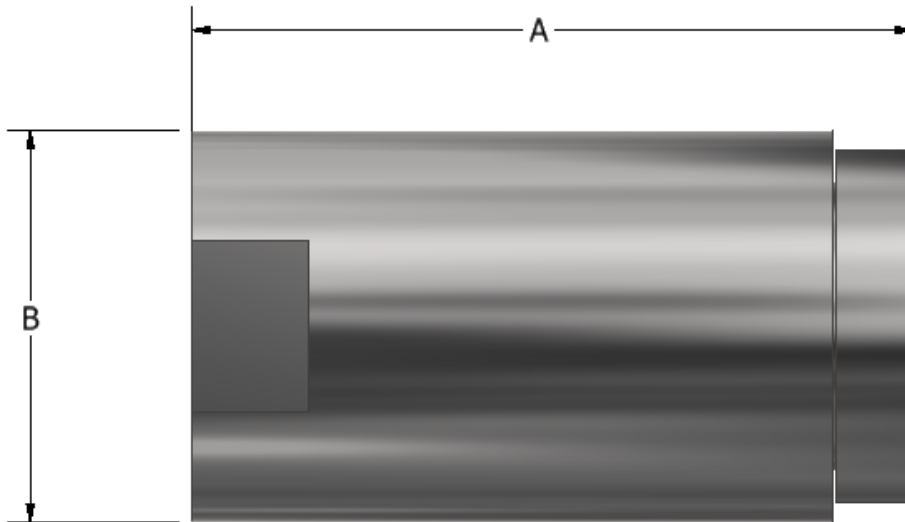


## OPERATION

The Ruelco CV-1 high pressure check valve is designed to provide reliable one way flow for a wide range of fluids and conditions. The 17-4 stainless steel construction and reliable soft seal O-rings allows for high corrosion resistance in harsh environments. The CV-1 was designed with a high flow rate in mind with the orifice being equal to 1/4" I.D. tubing. The simple design allows the valve to be disassembled and field repaired without the need for any special tools.

## FEATURES

- 316 stainless steel construction (N.A.C.E. model available)
- All soft seal design
- Large Cv factors produce large flow rates
- Small compact design
- Simple operation allows for easy repair



CHECK VALVE

## DIMENSIONS

A	2.31" (58.7 mm)
B	1.25" (31.8 mm)
PORT SIZES	1/4" FNPT
WEIGHT	10.6 oz (301 g)

PHONE: 504-340-0055  
FAX: 504-340-0056  
EMAIL: SALES@RUELCO.COM

1209 DISTRIBUTORS ROW  
NEW ORLEANS, LA 70123

# PARTS LIST

ITEM	QUANTITY	DESCRIPTION	MATERIAL
1	1	CAP	17-4 ST. STL.
2	1	BODY	17-4 ST. STL.
3*	1	O-RING	FLUOROCARBON
4*	1	O-RING	FLUOROCARBON
5	1	POPPET	17-4 ST. STL.
6	1	SPRING	316 ST. STL.

\* INDICATES ITEMS IN THE REPAIR KIT

## SPECIFICATIONS

VALVE BODY MAXIMUM WORKING PRESSURE	10,000 PSI (689.5 BAR)
CRACKING PRESSURE	5 PSI (0.34 BAR)
AMBIENT TEMPERATURE RANGE	-20 TO 250° F -29 TO 122° C
Cv FACTOR	2.0

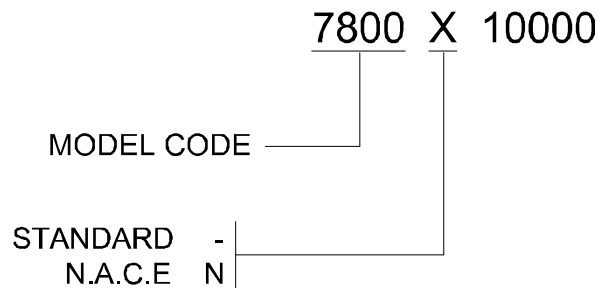
## REPAIR KIT

- 78-004-000

OTHER TEMPERATURE RANGES AND SEAL COMPOUNDS AVAILABLE UPON REQUEST

CHECK VALVE

## ORDERING CODE



PHONE: 504-340-0055  
 FAX: 504-340-0056  
 EMAIL: SALES@RUELCO.COM

1209 DISTRIBUTORS ROW  
 NEW ORLEANS, LA 70123