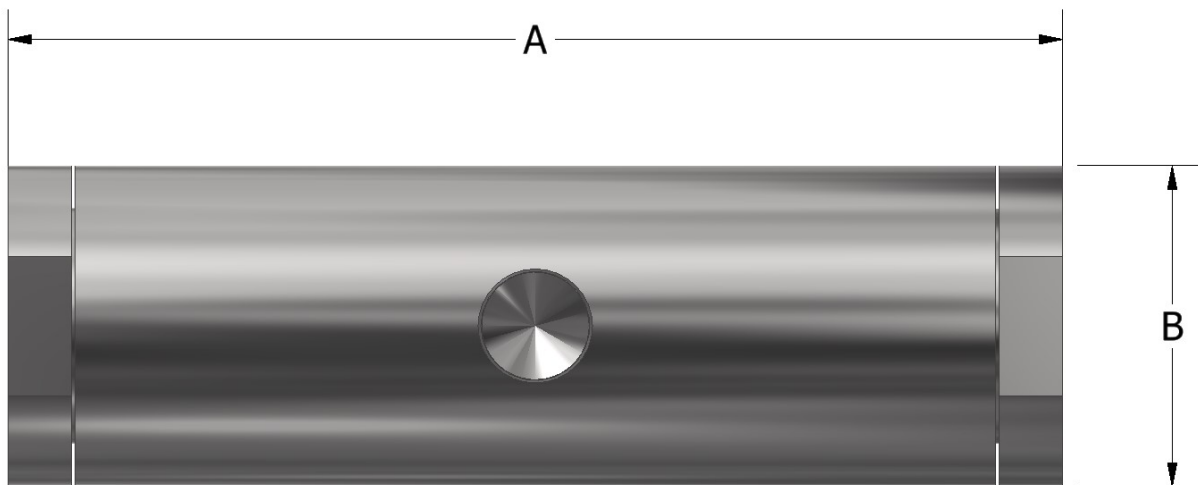


OPERATION

The Ruelco SV-1 Selector Valve is a double check valve with functions as a dual inlet port, non-return valve. The inlet with the higher pressure will be allowed to flow through to the outlet port, while the low pressure inlet pressure will be blocked. A fast response time is achieved with the minimum inlet differential of 5 psi and the high Cv factor. 17-4 stainless steel construction allows for high corrosion resistance in harsh environments and the simple design allows the valve to be repaired without the need for special tools.

FEATURES

- Stainless steel construction N.A.C.E. model available)
- All soft seal design
- Large Cv factors produce large flow rates
- Small compact design
- Simple operation allows for easy repair



SELECTOR CHECK VALVE

DIMENSIONS

A	3.67" (93.22 mm)
B	1.25" (31.8 mm)
CONNECTION PORT SIZES	1/4" NPT
WEIGHT	18.6 OZ (527.30 g)

PHONE: 504-340-0055
FAX: 504-340-0056
EMAIL: SALES@RUELCO.COM

1209 DISTRIBUTORS ROW
NEW ORLEANS, LA 70123

PARTS LIST

ITEM	QUANTITY	DESCRIPTION	MATERIAL
1	2	CAP	17-4 ST. STL.
2	1	BODY	17-4 ST. STL.
3*	2	O-RING	FLUOROCARBON
4*	2	O-RING	FLUOROCARBON
5	2	POPPET	17-4 ST. STL.
6	2	SPRING	316 ST. STL.

* INDICATES ITEMS IN THE REPAIR KIT

SPECIFICATIONS

MAXIMUM WORKING PRESSURE	10,000 PSI (689.5 BAR)
CRACKING PRESSURE	5 PSI (.34 BAR)
AMBIENT TEMPERATURE RANGE	-20 TO 250° F -29 TO 122° C
Cv FACTOR	2.0

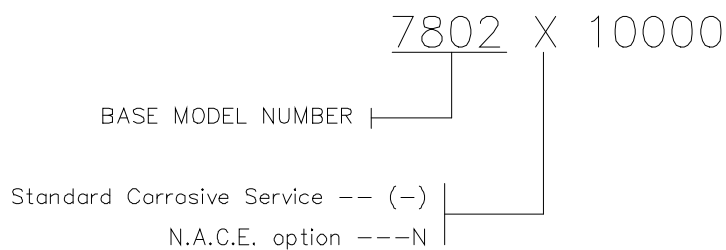
REPAIR KIT

- 78-101-000

OTHER TEMPERATURE RANGES AND SEAL COMPOUNDS AVAILABLE UPON REQUEST

SELECTOR CHECK VALVE

ORDERING CODE



PHONE: 504-340-0055
 FAX: 504-340-0056
 EMAIL: SALES@RUELCO.COM

1209 DISTRIBUTORS ROW
 NEW ORLEANS, LA 70123