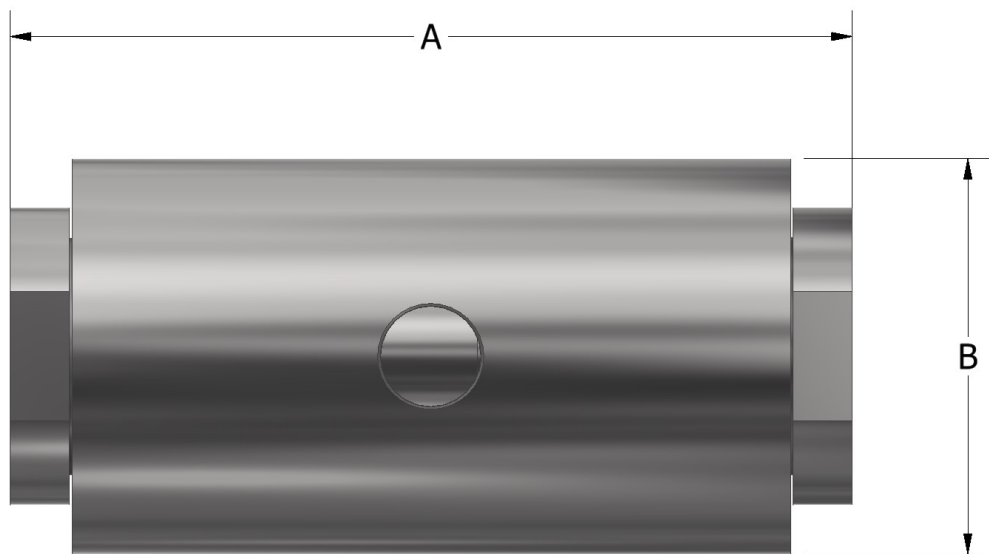


OPERATION

The Ruelco SV-2 Shuttle Valve is designed to function as a dual port, non-return selector valve. Only the inlet port with the higher pressure will flow through to the outlet port, while the other inlet port will be blocked. The high flow rate of the SV-2 allows for a quick response time due to the size of the designed orifices. The simple and compact design make the SV-2 easily repaired without the need for special tools.

FEATURES

- Stainless steel construction N.A.C.E. model available
- All soft seal design
- Large Cv factors produce large flow rates
- Small compact design
- Simple operation allows for easy repair



DIMENSIONS

A	3.54" (89.9 mm)
B	1.67" (42.4 mm)
PORT SIZE	1/4" FNPT
WEIGHT	1.85 LBS (839 g)

SV-2 SHUTTLE VALVE

PHONE: 504-340-0055
FAX: 504-340-0056
EMAIL: SALES@RUELCO.COM

1209 DISTRIBUTORS ROW
NEW ORLEANS, LA 70123

PARTS LIST

ITEM	QUANTITY	DESCRIPTION	MATERIAL
1	2	CAP	17-4 ST. STL.
2	1	BODY	17-4 ST. STL.
3*	2	O-RING	FLUOROCARBON
4*	2	O-RING	FLUOROCARBON
5	1	SHUTTLE	17-4 ST. STL.

* INDICATES ITEMS IN THE REPAIR KIT

SPECIFICATIONS

MAXIMUM WORKING PRESSURE	10,000 PSI (690 BAR)
CRACKING PRESSURE	5 PSI (0.34 BAR)
AMBIENT TEMPERATURE RANGE	-20 TO 250° F -29 TO 122° C
Cv FACTOR	2.0

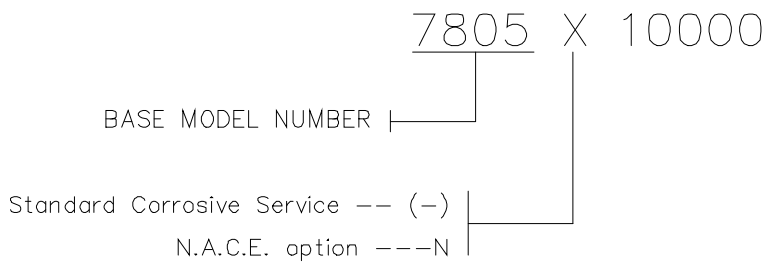
REPAIR KIT

- 78-101-000

OTHER TEMPERATURE RANGES AND SEAL COMPOUNDS AVAILABLE UPON REQUEST

SV-2 SHUTTLE VALVE

ORDERING CODE



PHONE: 504-340-0055
 FAX: 504-340-0056
 EMAIL: SALES@RUELCO.COM

1209 DISTRIBUTORS ROW
 NEW ORLEANS, LA 70123