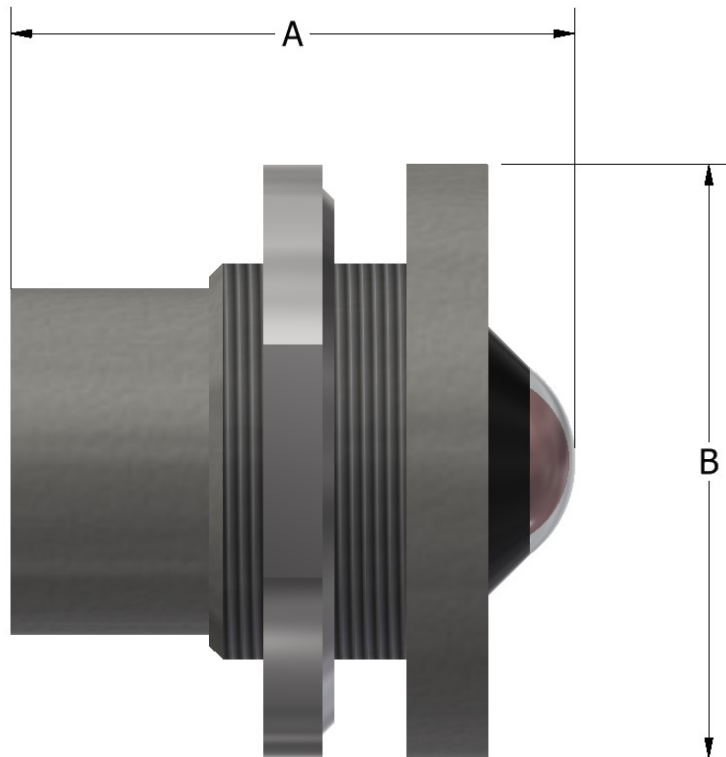


OPERATION

The Ruelco Status Indicator is designed to give positive indication of a pneumatic control signal. When pneumatic pressure is applied to the status indicator, the viewable window will indicate green. When the pneumatic signal is removed, the indicator will show red. Its simple and compact design makes maintenance and repair easy. The status indicator does not have to be removed from the control panel or system loop if repair or maintenance is necessary.

FEATURES

- Stainless steel construction N.A.C.E. model available)
- All soft seal design
- Small compact design
- Simple operation allows for easy repair



STATUS INDICATOR

DIMENSIONS

A	1.70" (43.18 mm)
B	1.50" (38.1 mm)
CONNECTION SIZE	1/8" FNPT

PHONE: 504-340-0055
FAX: 504-340-0056
EMAIL: SALES@RUELCO.COM

1209 DISTRIBUTORS ROW
NEW ORLEANS, LA 70123

PARTS LIST

ITEM	QUANTITY	DESCRIPTION	MATERIAL
1	1	INDICATOR	PLASTIC
2	1	PANEL NUT	316 ST. STL.
3	1	KNOB	316 ST. STL.
4*	1	BASE SEAL	FLUOROCARBON

* INDICATES ITEMS IN THE REPAIR KIT

SPECIFICATIONS

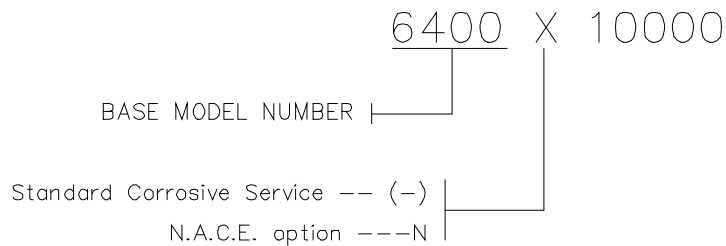
MAXIMUM WORKING PRESSURE	125 PSI (8.6 BAR)
AMBIENT TEMPERATURE RANGE	-20 TO 250 F -29 TO 122 C

REPAIR KIT

- 64-002-000

OTHER TEMPERATURE RANGES AND SEAL COMPOUNDS AVAILABLE UPON REQUEST

ORDERING CODE



STATUS INDICATOR

PHONE: 504-340-0055
 FAX: 504-340-0056
 EMAIL: SALES@RUELCO.COM

1209 DISTRIBUTORS ROW
 NEW ORLEANS, LA 70123